

254 Series Parallel Arms

OVERVIEW

With hundreds of systems installed in the most demanding environments our parallel arm lifters are a robust, well proven manipulator for high performance ergonomic handling of a wide variety of loads.

- Capacity from 150kg to 900kg
- Working height range up to 2000mm
- Reach up to 4500mm, with up to 360° slewing
- A large range of standard accessories
- A range of configurations from floor standing to overhead crane mounting
- Fully pneumatic powered lifting
- Modular counterweight system for heavy lift applications

Andron parallel arms are ideal for the manipulation of components needing orientation changes during lifting, or where there are obstructions that prevent traditional cranes systems from being used.

Heavily utilised in the automotive industry on main vehicle assembly and sub assembly production lines our systems are trusted to work reliably for hundreds of thousands of cycles annually giving a long service life with low maintenance levels



UP TO
900
KG

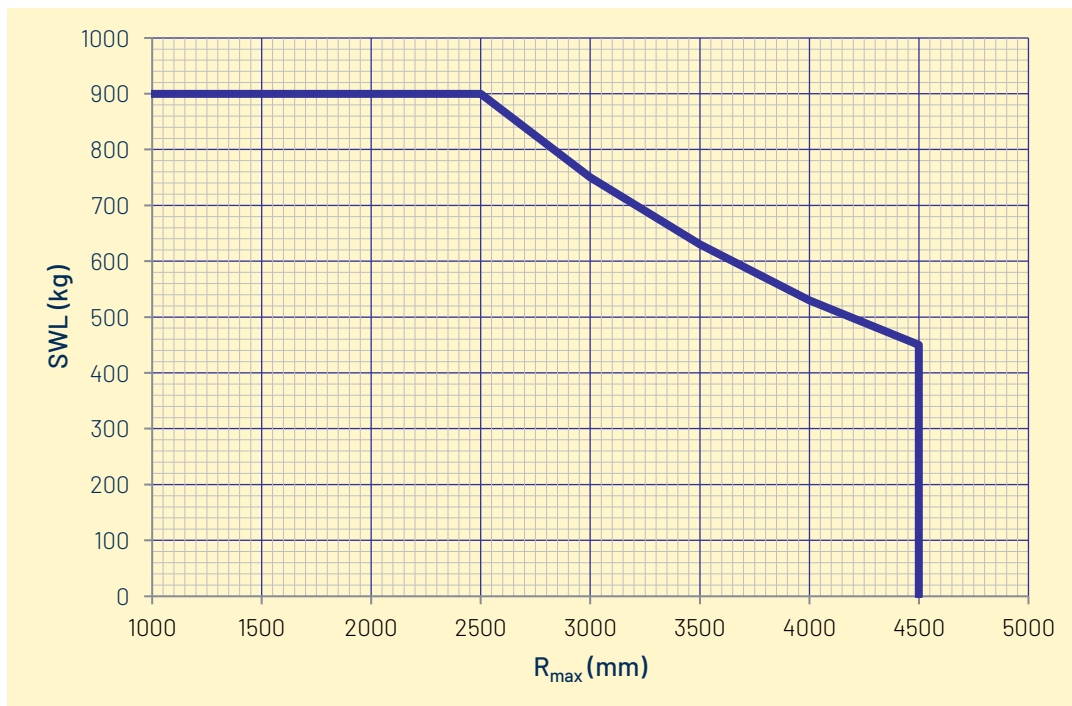
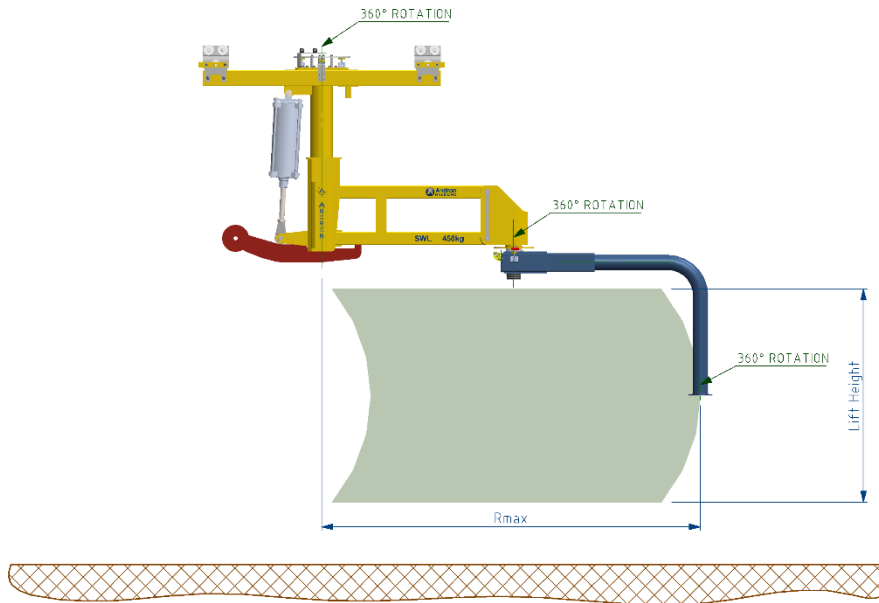
UP TO
2m
LIFT

UP TO
4.5m
REACH

Overhead rail mounted parallel arm assistor

CAPACITY

Note that there are several options we can adjust to modify the lift capacity, reach and working height range to suit your application. Our engineers will carry out detailed calculations to specify the correct system for your application.





Fixed Floor Standing



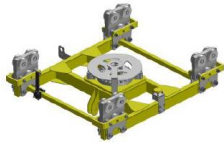
Mobile Floor Standing



Overhead Rail Mount



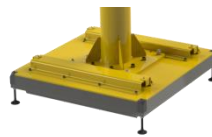
Light Crane Systems



Carriages



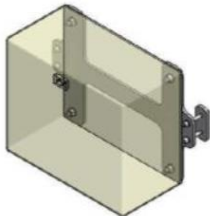
Floor Posts



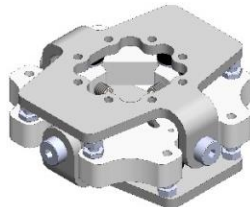
Mobile Base Units



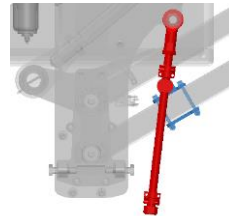
Secondary Arms & Drop Arms



Pneumatic Cabinet Accessories



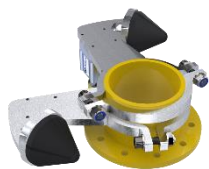
Gimbal Kits



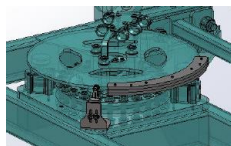
Height Stops



Indexing Height Stops



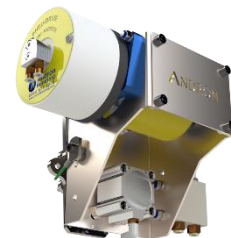
Adjustable Rotation Stops



Rotation Angle Sensors



Parking Brake Kits



Pneumatic Travel Drives