

253 Series Parallel Arms

OVERVIEW

With hundreds of systems installed in the most demanding environments our parallel arm lifters are a robust, well proven manipulator for high performance ergonomic handling of a wide variety of loads.

- Capacity from 50kg to 300kg
- Working height range up to 1500mm
- Reach up to 3500mm, with up to 360° slewing
- A large range of standard accessories
- A range of configurations from floor standing to overhead crane mounting
- Fully pneumatic with powered or balanced lifting

Andron parallel arms are ideal for the manipulation of components needing orientation changes during lifting, or where there are obstructions that prevent traditional cranes systems from being used.

Heavily utilised in the automotive industry on main vehicle assembly and sub assembly production lines our systems are trusted to work reliably for hundreds of thousands of cycles annually giving a long service life with low maintenance levels



UP TO
300
KG

UP TO
1.5m
LIFT

UP TO
3.5m
REACH

Fixed floor standing parallel arm with optional secondary reach arm



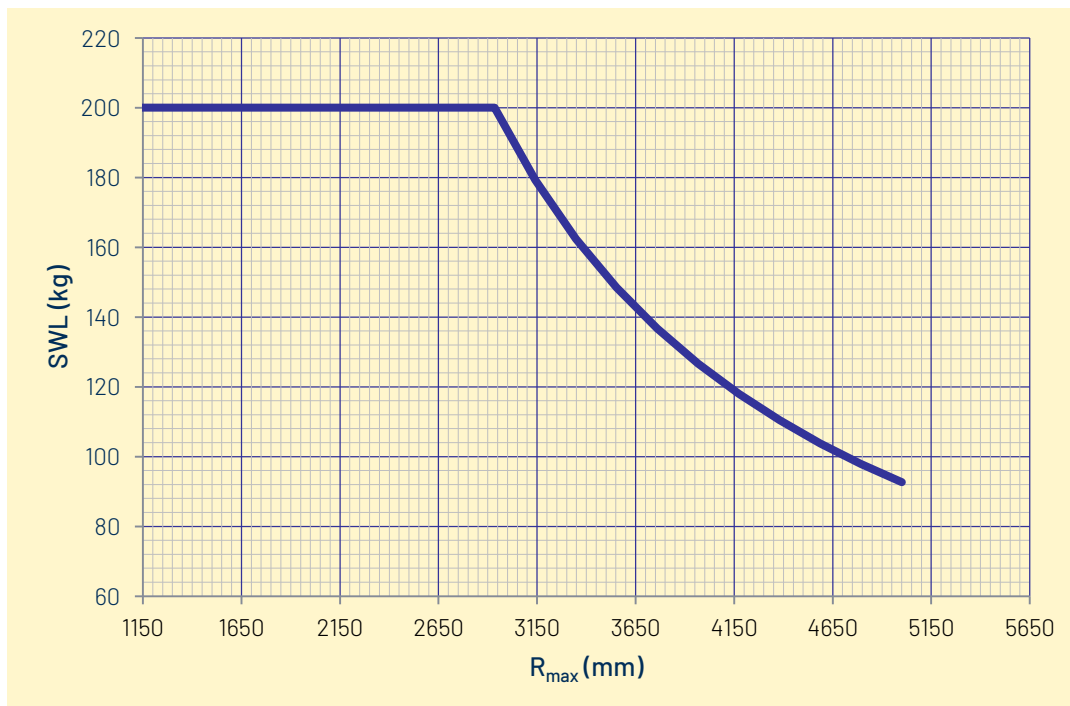
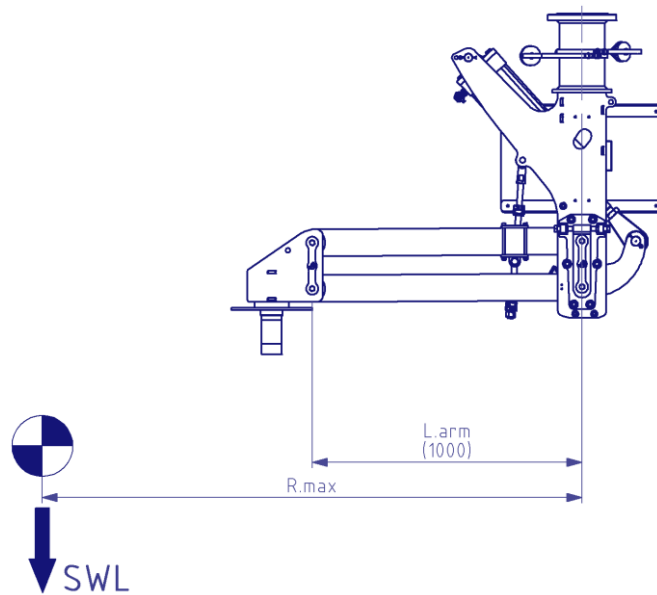
Mobile base system with counterweight, secondary reach arm, drop arm and compliance gimbal



Fixed floor standing parallel arm for hot press loading in aerospace component manufacture

CAPACITY

Note that there are a number of options we can adjust to modify the lift capacity, reach and working height range to suit your application. Our engineers will carry out detailed calculations to specify the correct system for your application.





Fixed Floor Standing



Mobile Floor Standing



Overhead Rail Mount



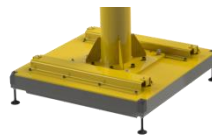
Light Crane Systems



Carriages



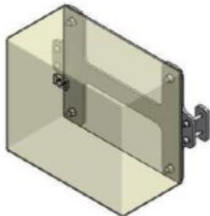
Floor Posts



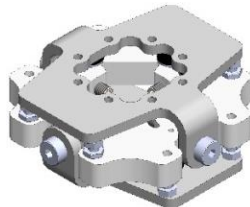
Mobile Base Units



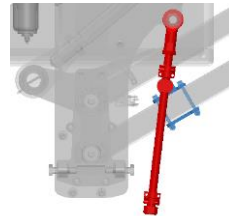
Secondary Arms & Drop Arms



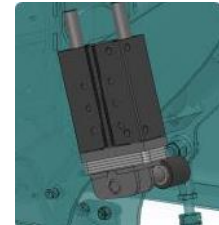
Pneumatic Cabinet Accessories



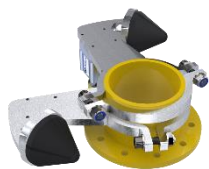
Gimbal Kits



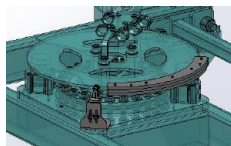
Height Stops



Indexing Height Stops



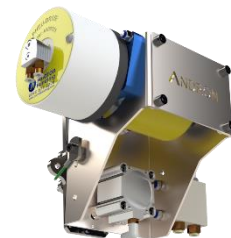
Adjustable Rotation Stops



Rotation Angle Sensors



Parking Brake Kits



Pneumatic Travel Drives