

# MTA Series Torque Reaction Arms

## OVERVIEW

A modular solution for ergonomically supporting DC tooling, with a wide range of tool adapters, mounting configurations and layout geometry

- High torque capacity
- Ultralight balanced lifting
- Modular design, easily adapted to a range of applications
- Tool mounts and gimbals with adjustable internal soft stops
- Braked rotation joints on main lift arm
- A wide range of accessories

Suitable for a wide range of electric and pneumatic nutrunners, our torque reaction arms are a light balance, high capacity solution.

Interconnecting modular tool attachments are combined to provide any required tool articulation. Internal end of travel stops eliminate finger traps, and careful design ensures loads are transmitted through the torque arms, not the operators.

Mounting options include floor standing, column mount, and overhead crane mount, all with height adjustment allowing easy installation and commissioning

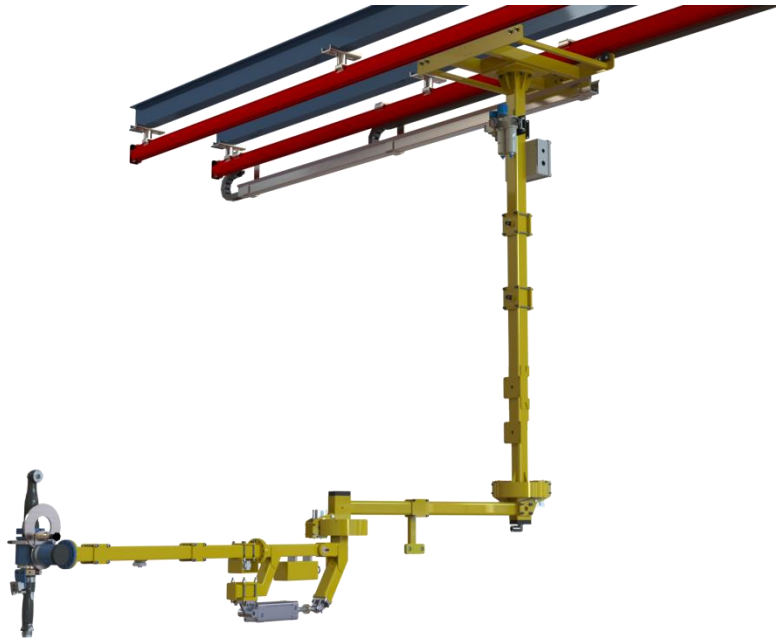


UP TO  
**1kNm**  
TORQUE

UP TO  
**1m**  
LIFT

UP TO  
**3m**  
REACH

*Modular torque reaction arm with tool clamp, gimbal and folding handle system*



Overhead mounted torque reaction system with adjustable mast, locking rotation joints and modular tool holder



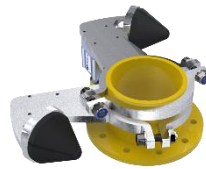
Column mounted torque reaction system, with braked rotation joints, folding handle and modular tool holder



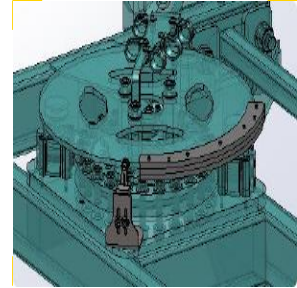
Light Crane Systems



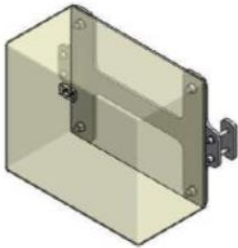
Carriages



Adjustable Rotation Stops



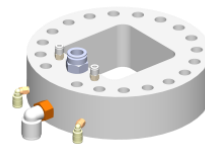
Rotation Angle Sensors



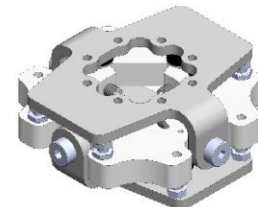
Pneumatic Cabinet Kits



Inertia Reel Secondary Restraints



Manifold Kits



Gimbals



Controller Mounts



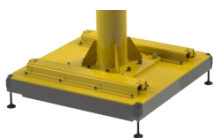
Tool Holders



Telescopic Masts



Wire Rope Lift Arms



Mobile Base Units



Floor Columns



Articulated Lift Arms



Spring Balance Kits