

MAB Series Pneumatic Balancers

OVERVIEW

Andron pneumatic balancers allow operators to not only lift but also to 'float' the load providing precise, ultralight ergonomic lifting.

- Suitable for loads from 5kg to 230kg
- Lift heights up to 3000mm
- Increased load capacities available
- Mounting kits for all light cranes
- Available with ultralight balance, or proportional up/down control
- High lift speeds
- Over-speed safety brake system included as standard

Our kits are available for a wide range of standard light crane systems and come complete with all necessary accessories for easy integration. Standard pneumatic circuits available include a proportional up/down control, or alternatively multi-load balance (float mode) systems for 'hands on' control of the load

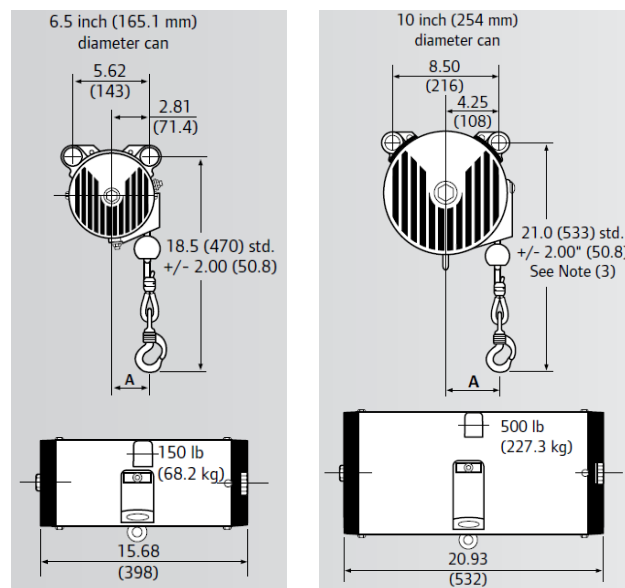
Balancers are a high performing replacement for electric hoists and wire rope systems where excellent ergonomic performance, high speed and precise control are required.



UP TO
230
KG

UP TO
3m
LIFT

Basic balancer kit with pneumatic circuit cabinet and rail system adapter



MAB-015

MAB-020 to MAB-050

BASE HOIST

Part Number	SWL at 7 bar (kg)*	Vertical Travel (mm)	Can Ø (mm)	A (mm)
MAB-015	68	2032	165	72
MAB-020	90	3048	254	104
MAB-035	158	2032	254	72
MAB-050	227	2032	254	92

* Note: recommended working load is 80% of maximum SWL



Hook Kits



Spreader Beams



Chain Slings



Wire Rope Slings



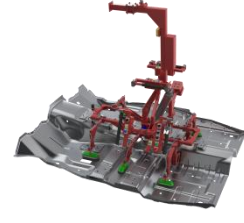
Magnetic Grippers



Manual Grippers



Pneumatic Grippers



Vacuum Grippers



Balance Handles



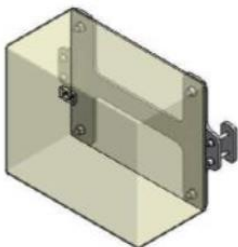
Inertia Reel Kits



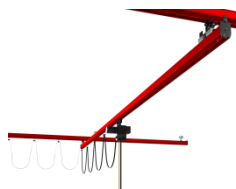
Hook Shock Absorbers



Tool Storage Systems



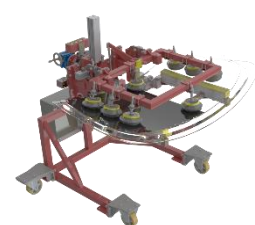
Control Cabinet Mounting



Light Crane Systems



Guide Trolleys



Vacuum Tables