

SL Series Single Lift Arms

OVERVIEW

SL Series single lift arms are a light, mobile and effective wire rope lifting system ideal for applications with limited overhead access

- Up to 75kg SWL standard
- Up to 1000mm lift height
- Up to 2000mm reach
- Light and extremely free moving
- Unique swiveling pulley reduces rope wear and risk of cable jumps
- Suitable for limited overhead access areas
- Can be mounted to a wide range of standard light crane systems



Designed to be mounted on free running aluminum runway rails and crane systems, this lightweight wire rope lifter is an ideal alternative to parallel arm or mast assistors in workstations where relatively low mass components need to be lifted.

A unique swiveling mechanism ensures the pulley tracks the wire rope, reducing wear and eliminating the risk of cable jumps.

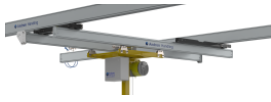
With a safe working load of up to 75kg and working radius up to 2000mm these assistors provide low operating forces, excellent ergonomics and high speed operation.

UP TO
75
KG

UP TO
2m
REACH

UP TO
1m
LIFT

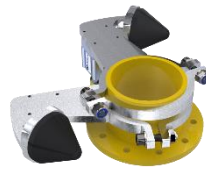
Base Lift Arm & Aluminium Carriage Unit



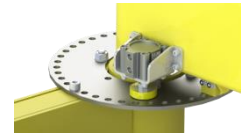
Light Crane Systems



Carriages



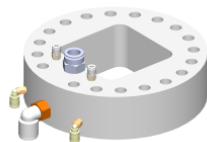
Adjustable Rotation Stop



Parking Brake Kits



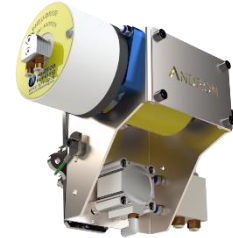
Inertia Reel Secondary Restraints



Low Profile Manifolds



360° Pneumatic Couplings



Pneumatic Travel Drives



Balance Handles



Hook Kits



Crane Hook Shock Absorbers



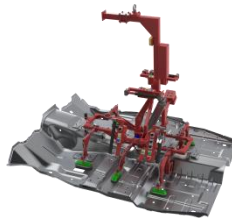
Wire Rope Slings



Manual Grippers



Magnetic Grippers



Vacuum Grippers



Pneumatic Grippers